



Sowing Growth &  
Eastern Ingham Farmers Market

# CALENDAR

# January

## 2023

### Legend

EIFM=Eastern Ingham  
Farmers Market  
SG = Sowing Growth  
PS = Pollination Station

PURPLE - US Holidays

RED - Nat'l

Recognition Days

BLUE - Market Theme



# January 2023

## Vegetarian Month

Sunday	Monday	Tuesday	Wednesday	Thursday	Friday	Saturday
<b>1</b> <b>New Year's Day</b> <u>SG Bottle/Can Collection 11-1</u>	<b>2</b> New Year's Day Holiday	<b>3</b>	<b>4</b> <b>Nat'l Trivia Day</b>	<b>5</b>	<b>6</b> <b>Nat'l Shortbread Day</b>	<b>7</b>
<b>8</b>	<b>9</b>	<b>10</b>	<b>11</b> <b>Nat'l Milk Day</b>	<b>12</b>	<b>13</b> <b>Nat'l Rubber Ducky Day</b> (Rotary ducks begin race prep!)	<b>14</b>
<b>15</b> <u>SG Bottle/Can Collection 11-1</u> <b>Nat'l Bagel Day</b>	<b>16</b> <b>M L King Day</b>	<b>17</b> <u>Sowing Growth Board Meeting Annual /monthly 7-9 PM</u>	<b>18</b> <b>Nat'l Michigan Day</b>	<b>19</b> <b>Nat'l Popcorn Day</b>	<b>20</b> <b>Nat'l Cheese Lover's Day</b>	<b>21</b>
<b>22</b>	<b>23</b>	<b>24</b> <b>Nat'l Beer Can Day (Save them for the Market!)</b>	<b>25</b>	<b>26</b>	<b>27</b>	<b>28</b> <b>Nat'l Seed Swap Day</b>
<b>29</b> <b>Nat'l Puzzle Day</b>	<b>30</b>	<b>31</b> <b>Nat'l Inspire Your Heart with Art Day</b>				

November -April Bottle & Can Collection is on the 1<sup>st</sup> and 3<sup>rd</sup> Sundays 11:00-1:00. May – mid October every Sunday, 10:00-2:00, the Bottles and Cans Returnable Station will be at the Market.

# VOLUNTEERS

Sally  
Maxwell  
Jane  
Sharon, Scott  
Dave  
Amy, Brooke



# February

# 2023



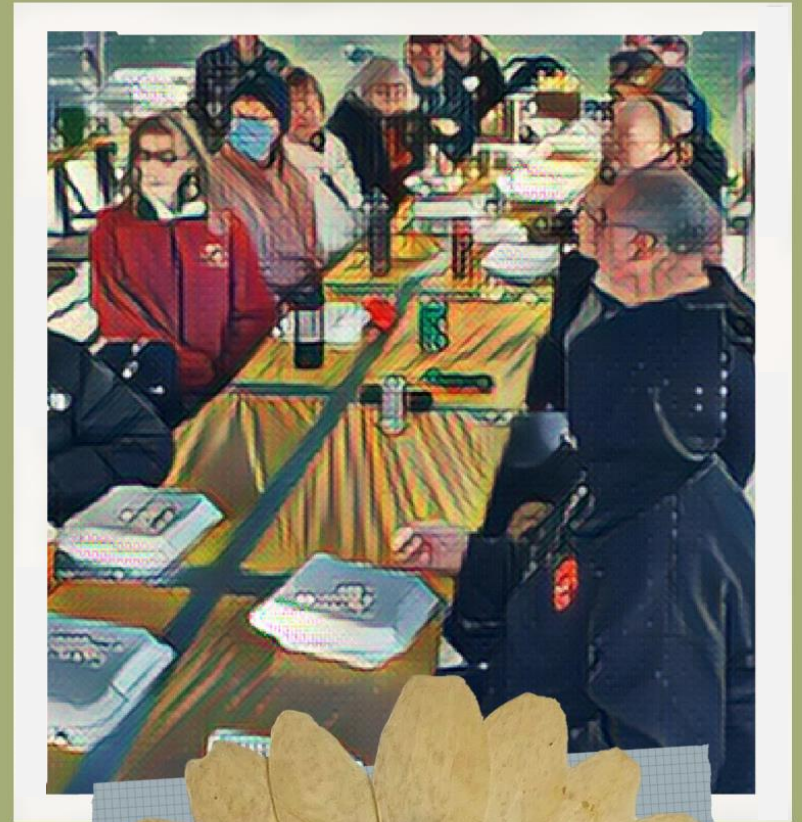
# February 2023

# Love Month

Sunday	Monday	Tuesday	Wednesday	Thursday	Friday	Saturday
			1	2 Nat'l Groundhog Day	3	4 Nat'l Homemade Soup Day
5 <u>SG Bottle/Can Collection 11-1</u>	6	7 Nat'l Send a Card to a Friend Day	8 Nat'l Boy Scouts Day	9	10	11
12 Nat'l Shut-In Visitation Day	13 Nat'l Day of the Big Game	14 Valentine's Day	15	16	17 Nat'l Caregivers Day Nat'l Cabbage Day	18
19 <u>SG Bottle/Can Collection 11-1</u>	20 President's Day	21 <u>Sowing Growth Board Meeting 7-9 PM</u>	22 Nat'l Cook a Sweet Potato Day	23	24	25
26 Nat'l Set a Good Example Day	27	28 Nat'l Floral Design Day				

November -April Bottle & Can Collection is on the 1<sup>st</sup> and 3<sup>rd</sup> Sundays 11:00-1:00. May – mid October every Sunday, 10:00-2:00, the Bottles and Cans Returnable Station will be at the Market.

# March 2023



# March 2023

# Disability Awareness Month

Sunday	Monday	Tuesday	Wednesday	Thursday	Friday	Saturday
			<b>1</b> Nat'l Pig Day	<b>2</b>	<b>3</b> Nat'l Employee Appreciation Day	<b>4</b>
<b>5</b> <u>SG Bottle/Can Collection 11-1</u>	<b>6</b>	<b>7</b>	<b>8</b> InterNat'l Women's Day	<b>9</b>	<b>10</b>	<b>11</b> Nat'l Johnny Appleseed Day
<b>12</b> Nat'l Girl Scout Day Daylight Savings Time	<b>13</b> Nat'l Napping Day	<b>14</b> Nat'l Learn About Butterflies Day	<b>15</b>	<b>16</b> Absolutely Incredible Kid Day	<b>17</b> St. Patrick's Day	<b>18</b>
<b>19</b> <u>SG Bottle/Can Collection 11-1</u> Nat'l Let's Laugh Day; Poultry Day	<b>20</b>	<b>21</b> Nat'l Ag Day <u>Sowing Growth Board Meeting 7-9 PM</u>	<b>22</b> <u>EIFM Kickoff Meeting 5:30-7:30 PM</u>	<b>23</b>	<b>24</b>	<b>25</b>
<b>26</b> Nat'l Spinach Day	<b>27</b>	<b>28</b> Nat'l American Diabetes Assoc. Alert Day	<b>29</b> Nat'l Little Red Wagon Day	<b>30</b> Take a Walk in the Park Day	<b>31</b> Nat'l Crayon Day	

November -April Bottle & Can Collection is on the 1<sup>st</sup> and 3<sup>rd</sup> Sundays 11:00-1:00. May – mid October every Sunday, 10:00-2:00, the Bottles and Cans Returnable Station will be at the Market.

April  
2023





# April 2023

# Earth Days Month

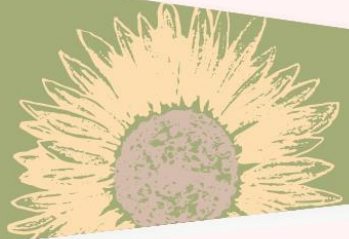
Sunday	Monday	Tuesday	Wednesday	Thursday	Friday	Saturday
						<b>1</b> April Fool's Day; Nat'l Handmade Day
<b>2</b> SG Bottle/Can Collection 11-1 World Autism Awareness Day	<b>3</b>	<b>4</b>	<b>5</b> Walking Day	<b>6</b> Nat'l Student Athlete Day	<b>7</b> Good Friday	<b>8</b>
<b>9</b> Easter	<b>10</b> Nat'l Farm Animals Day	<b>11</b>	<b>12</b> Nat'l Big Wind Day	<b>13</b> Nat'l Scrabble Day	<b>14</b> Nat'l Gardening Day	<b>15</b> Nat'l Take a Wild Guess Day
<b>16</b> SG Bottle/Can Collection 11-1 Nat'l Bean Counter Day	<b>17</b> InterNat'l Bat Appreciation Day	<b>18</b> Sowing Growth Board Meeting 7-9 PM	<b>19</b> Nat'l Garlic Day	<b>20</b> Get to Know Your Customers Day	<b>21</b>	<b>22</b> Nat'l Earth Day
<b>23</b>	<b>24</b>	<b>25</b> Nat'l Library Workers Day	<b>26</b> Nat'l Audubon Day; Library Outreach Day	<b>27</b> Nat'l Tell a Story Day	<b>28</b> Nat'l Arbor Day	<b>29</b>
<b>30</b>						

November -April Bottle & Can Collection is on the 1<sup>st</sup> and 3<sup>rd</sup> Sundays 11:00-1:00. May – mid October every Sunday, 10:00-2:00, the Bottles and Cans Returnable Station will be at the Market.



# May

## 2023



# May 2023

# Asparagus Month

Sunday	Monday	Tuesday	Wednesday	Thursday	Friday	Saturday
	<b>1</b> Nat'l Principals' Day	<b>2</b> Teacher Day	<b>3</b>	<b>4</b> Nat'l Bird Day	<b>5</b> Cinco de Mayo	<b>6</b> Nat'l Fitness Day
<b>7</b> SG Bottle/Can Collection 11-1	<b>8</b>	<b>9</b> Nat'l Lost Sock Day	<b>10</b>	<b>11</b>	<b>12</b> Nat'l Limerick Day	<b>13</b> Nat'l Stamp Out Hunger Food Drive
<b>14</b> EIFM 10-2 Mother's Day Theme: Welcome Home	<b>15</b> Nat'l Chocolate Chip Day	<b>16</b> Nat'l Barbecue Day <u>Sowing Growth Board Meeting</u> 7-9 PM	<b>17</b>	<b>18</b>	<b>19</b> Nat'l Endangered Species Day	<b>20</b>
<b>21</b> EIFM 10-2 Theme: Asparagus PS: CADL Nature Discovery	<b>22</b>	<b>23</b> Nat'l Lucky Penny Day	<b>24</b> Nat'l Scavenger Hunt Day	<b>25</b>	<b>26</b> Nat'l Paper Airplane Day	<b>27</b>
<b>28</b> EIFM 10-2 Theme: Rhubarb PS: None	<b>29</b> Memorial Day	<b>30</b>	<b>31</b>			

Starting May 14, the Bottles and Cans Returnable Station will be at the Market each Sunday, until Oct. 15<sup>th</sup>, when it resumes its 1<sup>st</sup> and 3<sup>rd</sup> Sunday of every month.



# June

2023

WORKING



# June 2023

# Pollinators Month

Sunday	Monday	Tuesday	Wednesday	Thursday	Friday	Saturday
				1	2 Nat'l Rotisserie Chicken Day	3 Nat'l Egg Day
4 EIFM 10-2 Theme: Nat'l Cheese Day PS: None	5	6 Nat'l Gardening Exercise Day	7 World Caring Day	8 Nat'l Best Friends Day	9	10 Nat'l Herbs and Spices Day
11 EIFM 10-2 Theme: Flag Etiquette PS: Scouts	12 Nat'l Peanut Butter Cookie Day	13 Nat'l Sewing Machine Day	14 Nat'l Flag Day	15	16 Fresh Veggies Day	17
18 EIFM 10-2 Theme: Father's Day PS: Red Cedar Water Trail Nature Discovery	19 Juneteenth Red Cedar Jubilee Week June 19-25	20 <u>Sowing Growth Board Meeting</u> 7-9 PM	21 Summer Begins. Longest day of year.	22	23 Nat'l Hydration Day	24 Jubilee Parade Rotary Duck Race
25 EIFM 10-2 Theme: Red Cedar Jubilee Strawberries Day PS: CADL- Williamston	26	27 Nat'l Onion Day	28	29 Nat'l Handshake Day	30	

Starting May 14, the Bottles and Cans Returnable Station will be at the Market each Sunday, until Oct. 15<sup>th</sup>, when it resumes its 1<sup>st</sup> and 3<sup>rd</sup> Sunday of every month.

# July 2023



# July 2023

## Picnics Month

Sunday	Monday	Tuesday	Wednesday	Thursday	Friday	Saturday
						<b>1</b> Nat'l U.S. Postal Worker Day
<b>2</b> EIFM 10-2 Theme: Happy 4 <sup>th</sup> PS: None	<b>3</b> Nat'l Eat Your Beans Day	<b>4</b> Independence Day Spareribs Day	<b>5</b>	<b>6</b> Nat'l Fried Chicken Day	<b>7</b>	<b>8</b>
<b>9</b> EIFM 10-2 Theme: Animals Big and Small PS: WRCGC on IPM Nature Discovery	<b>10</b> Nat'l Kitten Day	<b>11</b> Pet/Cow Day	<b>12</b>	<b>13</b> Nat'l Barbershop Music Day	<b>14</b>	<b>15</b> Nat'l I Love Horses Day; Give Something Away Day
<b>16</b> EIFM 10-2 Theme: Ice Cream PS: The Red Cedar Water Trail	<b>17</b>	<b>18</b> <u>Sowing Growth Board Meeting</u> 7-9 PM	<b>19</b> Nat'l Hot Dog Day	<b>20</b> Nat'l Get to Know Your Customers Day	<b>21</b>	<b>22</b> Nat'l Hammock Day
<b>23</b> EIFM 10-2 Theme: Picnic Day PS: CADL-Williamston	<b>24</b>	<b>25</b> Nat'l Wine and Cheese Day	<b>26</b> Disability Independence Day	<b>27</b> Nat'l Chili Dog Day	<b>28</b>	<b>29</b> Nat'l Chicken Wing Day
<b>30</b> EIFM 10-2 Theme: Cheesecake Day PS: None	<b>31</b> Nat'l Mutt Day					

Starting May 14, the Bottles and Cans Returnable Station will be at the Market each Sunday, until Oct. 15<sup>th</sup>, when it resumes its 1<sup>st</sup> and 3<sup>rd</sup> Sunday of every month.



August 2023

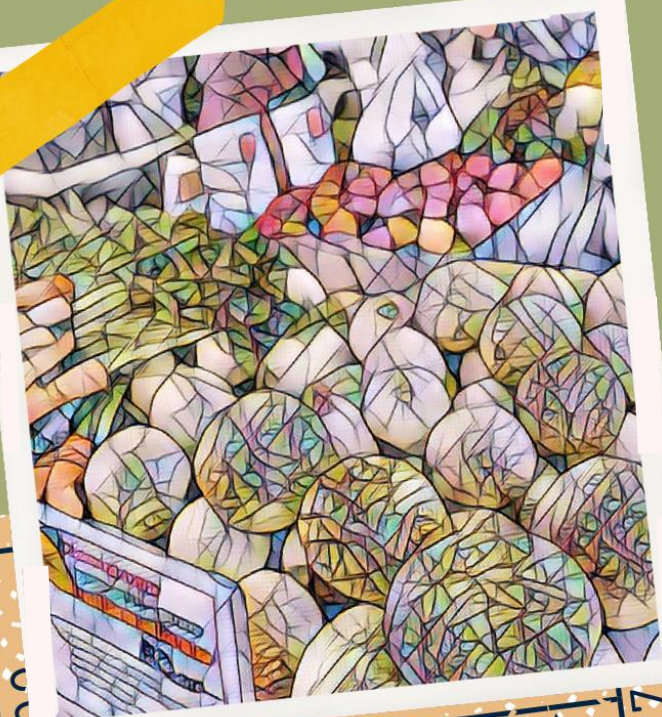


# August 2023

## Family Meal Month

Sunday	Monday	Tuesday	Wednesday	Thursday	Friday	Saturday
		<b>1</b> Nat'l Night Out	<b>2</b> Nat'l Coloring Book Day	<b>3</b> Nat'l Watermelon Day	<b>4</b> Nat'l Chocolate Chip Cookie Day	<b>5</b>
<b>6</b> EIFM 10-2 Theme: Farmers Market Week PS: Sowing Growth Nature Discovery POP Club	<b>7</b>	<b>8</b> Nat'l Happiness Day	<b>9</b> Nat'l Book Lovers Day	<b>10</b>	<b>11</b>	<b>12</b> Nat'l Garage Sale Day
<b>13</b> EIFM 10-2 Theme: Market Garage Sale PS: POP Club	<b>14</b>	<b>15</b> Nat'l Relaxation Day	<b>16</b> Nat'l Tell a Joke Day	<b>17</b> Nat'l Nonprofit Day	<b>18</b>	<b>19</b> Nat'l Potato Day; World Honey Bee Day
<b>20</b> EIFM 10-2 Theme: Support Bees PS: Senior Center CADL-Williamston POP Club	<b>21</b>	<b>22</b> Sowing Growth Board Meeting 7-9 PM	<b>23</b> Nat'l Ride the Wind Day	<b>24</b>	<b>25</b>	<b>26</b>
<b>27</b> EIFM 10-2 Theme: Senior Citizen Day PS: POP Club	<b>28</b> Nat'l Thoughtful Day	<b>29</b> Nat'l Lemon Juice Day	<b>30</b>	<b>31</b> Nat'l Eat Outside Day		

# September 2023



# September 2023

# Organic Harvest Month

Sunday	Monday	Tuesday	Wednesday	Thursday	Friday	Saturday
					<b>1</b> Nat'l Food Bank Day	<b>2</b> Nat'l Tailgating Day
<b>3</b> EIFM 10-2 Theme: <b>Wildlife</b> PS: None	<b>4</b> Labor Day Nat'l Wildlife Day	<b>5</b>	<b>6</b> Nat'l Read a Book Day	<b>7</b> Nat'l Acorn Squash Day	<b>8</b>	<b>9</b>
<b>10</b> EIFM 10-2 Theme: <b>Grandparents Day</b> PS: Red Cedar Water Trail Nature Discovery	<b>11</b>	<b>12</b> Encouragement Day	<b>13</b>	<b>14</b>	<b>15</b> Nat'l Toasted Cheese Sandwich Day	<b>16</b> Nat'l Clean Up Day
<b>17</b> EIFM 10-2 Theme: <b>Apple Appreciation</b> PS: Red Cedar Water Trail	<b>18</b>	<b>19</b> <u>Sowing Growth Board Meeting</u> <u>7-9 PM</u>	<b>20</b>	<b>21</b> Nat'l Pecan Cookie day	<b>22</b>	<b>23</b> Fall Begins
<b>24</b> EIFM 10-2 Theme: <b>Coffee Day</b> PS:	<b>25</b> Nat'l Family Day	<b>26</b>	<b>27</b>	<b>28</b> Nat'l Good Neighbor Day	<b>29</b> Nat'l Coffee Day	<b>30</b> Nat'l Hot Mulled Cider Day

# October 2023



# October 2023

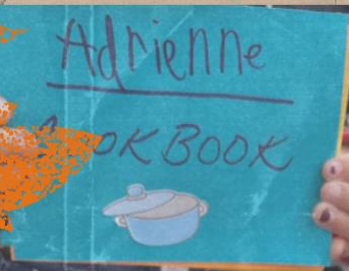
## Farm to School Month

Sunday	Monday	Tuesday	Wednesday	Thursday	Friday	Saturday
<b>1</b> EIFM 10-2 <b>Theme: World Vegetarian Day</b> PS: WRCGC- Mason bees	<b>2</b> <b>Cabrini Day</b> <b>Nat'l Child Health Day</b>	<b>3</b> <b>Nat'l Eat Fruit Day</b>	<b>4</b>	<b>5</b> <b>World Teachers Day</b>	<b>6</b> <b>World Smile Day</b>	<b>7</b>
<b>8</b> EIFM 10-2 <b>Theme: Native American Day</b> PS:	<b>9</b> <b>Columbus Day</b> <b>US Indigenous People's Day</b>	<b>10</b>	<b>11</b>	<b>12</b> <b>Nat'l Farmers Day</b>	<b>13</b>	<b>14</b>
<b>15</b> EIFM 10-2 <b>Theme: Thank You, Customers!</b> PS:	<b>16</b>	<b>17</b> <u>Sowing Growth Board Meeting</u> 7-9 PM	<b>18</b> <b>Support Your Local Chamber of Commerce Day</b>	<b>19</b> <b>Get to Know Your Customers Day</b>	<b>20</b>	<b>21</b> <b>Nat'l Sweetest Day</b>
<b>22</b>	<b>23</b>	<b>24</b> <b>Nat'l Food Day</b>	<b>25</b>	<b>26</b> <b>Nat'l Pumpkin Day</b>	<b>27</b>	<b>28</b> <b>Nat'l Chocolate Day</b>
<b>29</b>	<b>30</b>	<b>31</b> <b>Halloween</b>				

Starting May 14, the Bottles and Cans Returnable Station will be at the Market each Sunday, until November, when it resumes its 1<sup>st</sup> and 3<sup>rd</sup> Sunday of every month.

# November

## 2023



Add a comment



Welcome to our Market!! It's APPLE DAY

MAKE a Passport BOOK

WORLD Vegetarian DAY!



13

13 A

FILM NEGATIVE

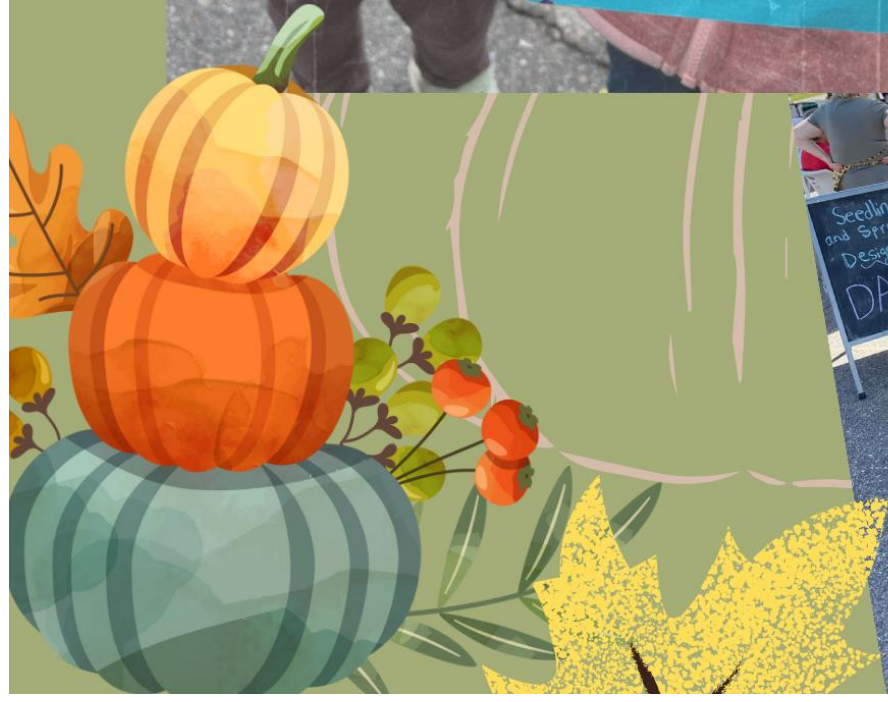


14

14 A

FILM NEGATIVE

FILM NEGATIVE



# November 2023

# Giving Thanks Month

Sunday	Monday	Tuesday	Wednesday	Thursday	Friday	Saturday
			<b>1</b> Nat'l Family Literacy Day Nat'l Vinegar Day	<b>2</b> Nat'l Deviled Egg Day	<b>3</b>	<b>4</b> Daylight Saving Time Ends
<b>5</b> Daylight Savings Time Ends SG Bottle/Can Collection 11-1	<b>6</b>	<b>7</b>	<b>8</b> Nat'l Cappuccino Day	<b>9</b>	<b>10</b>	<b>11</b> Veterans Day
<b>12</b>	<b>13</b> World Kindness Day	<b>14</b> Nat'l Pickle Day Sowing Growth Board Meeting 7-9 PM	<b>15</b> America Recycles Day	<b>16</b>	<b>17</b> Nat'l Butter Day	<b>18</b> Nat'l Adoption Day
<b>19</b> SG Bottle/Can Collection 11-1	<b>20</b> Nat'l Child's Day	<b>21</b>	<b>22</b>	<b>23</b> Thanksgiving Day	<b>24</b> Native American Heritage Day	<b>25</b> Nat'l Small Business Day
<b>26</b> Nat'l Cake Day	<b>27</b>	<b>28</b> Giving Tuesday	<b>29</b>	<b>30</b> Nat'l Mason Jar Day		

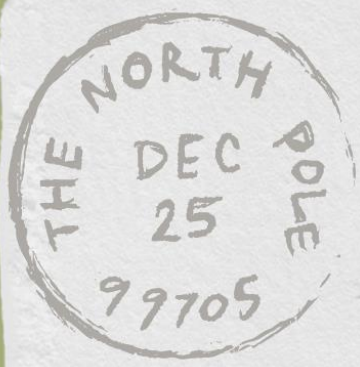
Starting May 14, the Bottles and Cans Returnable Station will be at the Market each Sunday, until November, when it resumes its 1<sup>st</sup> and 3<sup>rd</sup> Sunday of every month.



*ba*



*Like. It's  
so so if you  
essin. You'll  
to... arably.*



*December*  
2023





# December 2023

# Holiday Lights Month

Sunday	Monday	Tuesday	Wednesday	Thursday	Friday	Saturday
					<b>1</b> Nat'l Eat a Red Apple Day	<b>2</b> Special Education Day
<b>3</b> <u>SG Bottle/Can Collection 11-1</u>	<b>4</b>	<b>5</b> World Soil Day	<b>6</b>	<b>7</b> Pearl Harbor Remembrance Day	<b>8</b>	<b>9</b>
<b>10</b> Human Rights Day	<b>11</b>	<b>12</b> Poinsettia Day	<b>13</b> Nat'l Day of the Horse	<b>14</b>	<b>15</b>	<b>16</b> Chocolate-covered Anything Day
<b>17</b> EIFM 10-2 <u>Holiday Market</u>  <u>SG Bottle/Can Collection 10-2</u>	<b>18</b>	<b>19</b> <u>Sowing Growth Board Meeting 7-9 PM</u>	<b>20</b>	<b>21</b> Nat'l Re-gifting Day	<b>22</b> Winter Solstice	<b>23</b>
<b>24</b> Nat'l Eggnog Day	<b>25</b> Christmas	<b>26</b>	<b>27</b> Nat'l Fruitcake Day	<b>28</b> Nat'l Card Playing Day	<b>29</b>	<b>30</b> Nat'l Bacon Day
<b>31</b> New Year's Eve						

Starting May 14, the Bottles and Cans Returnable Station will be at the Market each Sunday, until Oct. 15<sup>th</sup>, when it resumes its 1<sup>st</sup> and 3<sup>rd</sup> Sunday of every month.

# Sowing Growth Board of Directors For 2023

## **Board of Directors:**

Jane Reagan, President  
(517) 525-4177

[JaneEllenReagan@gmail.com](mailto:JaneEllenReagan@gmail.com)

Ryan Edberg, V. President/President Elect  
(810) 240-4137

[Ryan\\_Edberg@hotmail.com](mailto:Ryan_Edberg@hotmail.com)

Symantha Outwater, Secretary  
(517) 468-3215

[Symantha\\_Outwater@gmail.com](mailto:Symantha_Outwater@gmail.com)

Carrie Pahl, CPA Treasurer  
(517) 321-5990 ext. 20

[pahlca@gmail.com](mailto:pahlca@gmail.com)

Sharon L. LaPointe, Immediate Past President  
(517) 927-9316

[LaPointe.Sharon1@gmail.com](mailto:LaPointe.Sharon1@gmail.com)

Scott VanAllsburg  
(517) 449-5528

[olioli@Frontier.net](mailto:olioli@Frontier.net)

Jackie Ellis  
(586) 876-5764

[JHarris0701@gmail.com](mailto:JHarris0701@gmail.com)

Carol Grainger  
(517) 449-7832

[grainger.carol.cl@gmail.com](mailto:grainger.carol.cl@gmail.com)

Michelle Martin  
(517) 242-8074

[MPenzer@att.net](mailto:MPenzer@att.net)

Frank Vicente  
(517) 410-8738

[Letsbefrank517@gmail.com](mailto:Letsbefrank517@gmail.com)

Tom Cary Market Manager  
(517) 618-1630

[EasternInghamFM@Gmail.com](mailto:EasternInghamFM@Gmail.com)

<https://www.easterninghamfarmersmarket.org>

Visit us on Facebook  
Eastern Ingham Farmers Market

## OUR VISION



Sowing Growth will meet the community's need for healthy fresh food and "food for the soul" through inviting educational opportunities that convey food production from farm to table, and artistic production from inspiration to expression.



One can, one bottle at a time. Money raised by SG's returnable program supports the Market operation.

Starting May 14<sup>th</sup>, the Bottles and Cans Returnable Station will be at the Market each Sunday, until Oct. 15<sup>th</sup>, when it resumes its 1<sup>st</sup> and 3<sup>rd</sup> Sunday of every month.